



**HAL**  
open science

# New species and new country records in Neotropical Cerambycidae (Coleoptera)

Sergio Devesa, Vlasak Josef

► **To cite this version:**

Sergio Devesa, Vlasak Josef. New species and new country records in Neotropical Cerambycidae (Coleoptera). *Faunitaxys*, 2023, 11 (42), pp.1-11. hal-04145283

**HAL Id: hal-04145283**

**<https://hal.science/hal-04145283>**

Submitted on 29 Jun 2023

**HAL** is a multi-disciplinary open access archive for the deposit and dissemination of scientific research documents, whether they are published or not. The documents may come from teaching and research institutions in France or abroad, or from public or private research centers.

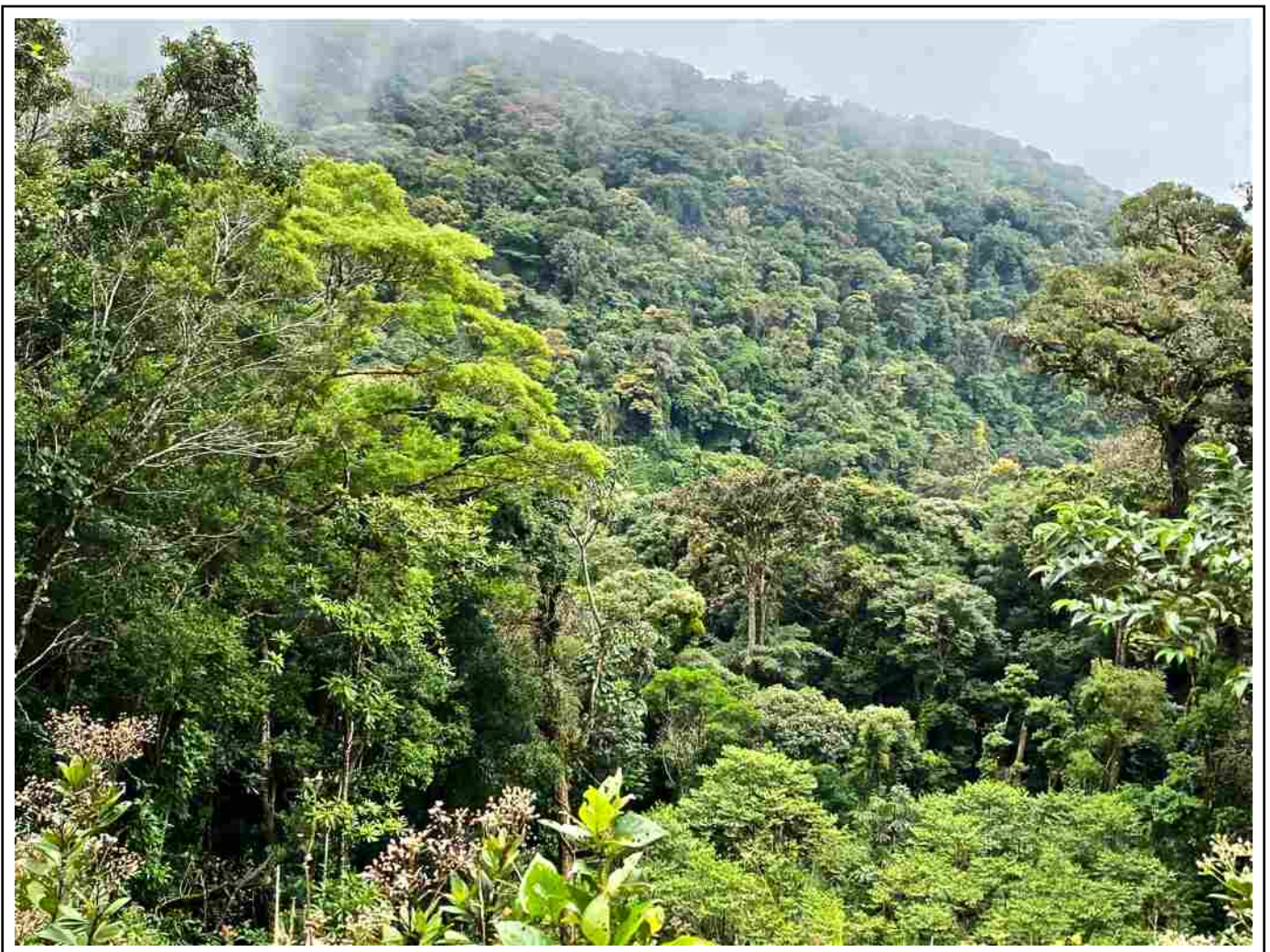
L'archive ouverte pluridisciplinaire **HAL**, est destinée au dépôt et à la diffusion de documents scientifiques de niveau recherche, publiés ou non, émanant des établissements d'enseignement et de recherche français ou étrangers, des laboratoires publics ou privés.



Distributed under a Creative Commons Attribution - NonCommercial - NoDerivatives | 4.0  
International License

# Faunitaxys

*Revue de Faunistique, Taxonomie et Systématique  
morphologique et moléculaire*



Volume 11  
Numéro 42

Juin 2023

ISSN (Print) : 2269 - 6016  
ISSN (Online) : 2970 - 4960  
Dépôt légal : Juin 2023

# Faunitaxys

*Revue de Faunistique, Taxonomie et Systématique  
morphologique et moléculaire*

ZooBank : <http://zoobank.org/79A36B2E-F645-4F9A-AE2B-ED32CE6771CC>

Directeur de la publication, rédacteur, conception graphique et PAO:

*Lionel Delaunay*

Cette revue ne peut pas être vendue

Elle est distribuée par échange aux institutions (version papier)

et sur simple demande aux particuliers (format PDF)

à l'adresse suivante:

AFCFF (Association française de Cartographie de la Faune et de la Flore)

28, rue Voltaire, F- 42100 Saint Etienne

E-mail: [faunitaxys.journal@gmail.com](mailto:faunitaxys.journal@gmail.com)

Elle est disponible librement au téléchargement à partir du site:

<http://faunitaxys.fr/>

La parution de *Faunitaxys* est apériodique

*Faunitaxys* est indexé dans / *Faunitaxys* is indexed in:

- **Zoological Record**

Articles and nomenclatural novelties are referenced by:

- **ZooBank** (<http://zoobank.org>)

Online Archives:

- **HAL** (<https://hal.archives-ouvertes.fr>)

- **Internet Archive** (<https://archive.org>)

Imprimée sur les presses de SPEED COPIE, 6, rue Tréfilerie, F- 42100 Saint-Etienne

**Imprimé le 20 06 2023**

# New species and new country records in Neotropical Cerambycidae (Coleoptera)

SERGIO DEVESA (1,\*) & JOSEF VLASAK (2)

(1) La Iglesia, 4, 36988 O Grove-San Vicente, Pontevedra, España.

- [sergio.devesa@gmail.com](mailto:sergio.devesa@gmail.com) - Orcid: <https://orcid.org/0000-0003-4159-4776> - ZooBank: <http://zoobank.org/AD8E9FB4-1249-43B9-B4B3-B633721E4D39>

(2) 207 Silverbrook Drive, Schwenksville, PA 19473, U.S.A.

- [josef\\_vlasak@merck.com](mailto:josef_vlasak@merck.com) - Orcid: <https://orcid.org/0000-0001-7514-0305> - ZooBank: <http://zoobank.org/831384B3-8326-4CF2-840A-184EFCFCC95D>

\* Corresponding author

## Keywords:

Coleoptera;  
Cerambycidae;  
Longhorned woodboring  
beetles;  
Distribution;  
Central America;  
Taxonomy.

**Abstract.** – A new species of Acanthocinini, *Pseudastylopsis santossilvai* sp. nov., from Costa Rica and Panama, is described and illustrated. New geographical records for Costa Rica are provided and the species are illustrated: *Plistonax pictus* (Galileo & Martins, 2012) (Acanthoderini); *Anisotyma soteri* Napp & Monné, 2009 (Dryobiini); *Placoeme vitticollis* Chemsak & Linsley, 1964 (Oemini). New geographical records for Panama are provided and the species are illustrated: *Atrypanius cinerascens* (Bates, 1864) (Acanthocinini) and *Ambonus electus* (Gahan, 1904) and *Anelaphus souzai* (Zajciw, 1964) (Elaphidiini). The species-group name of *Pseudastylopsis albus* Pérez-Flores & Santos-Silva, 2021 is corrected.

Devesa S. & Vlasak J., 2023. – New species and new country records in Neotropical Cerambycidae (Coleoptera). *Faunitaxys*, 11(42): 1 – 11.

DOI: [https://doi.org/10.57800/faunitaxys-11\(42\)](https://doi.org/10.57800/faunitaxys-11(42))

ZooBank: <http://zoobank.org/9AC1FEA9-6E2D-49D9-8D7A-3CA9F745330D>

Received: 16/05/2023 – Revised: 14/06/2023 – Accepted: 15/06/2023

## Introduction

*Pseudastylopsis* Dillon, 1956 is a small genus of Acanthocinini Blanchard, 1845. Currently, it has five described species and one subspecies, distributed from the USA (Arizona, California, Oregon, Nevada, and Texas), Mexico (Durango, Oaxaca, and Sinaloa), to Honduras and Guatemala (Monné 2023a; Tavakilian & Chevillotte 2022). The identification of the species of this genus is problematic regarding the definition and limits.

In this work, we deal with some of these problems and describe a new species from Costa Rica and Panama. Finally, we present new country records for Acanthocinini, Acanthoderini, Dryobiini, Elaphidiini, and Oemini.

## Material and Methods

New species, *Pseudastylopsis santossilvai* holotype, *Ambonus electus*, *Anelaphus souzai*, and *Atrypanius cinerascens*: general observations and measurements (mm) were made using an ocular micrometer adapted to an Olympus SZX7 0.8-5.6X stereomicroscope; photographs were taken with a Canon EOS 5D Mark III DSLR camera equipped with a Canon MP-E 65mm f/2.8 1-5X macro lens, controlled by Cognisys Stackshot; photographs were stacked using Zerene Stacker AutoMontage software and processed with Capture One 21 software. Paratype male and female (JVCO): photographs were taken with a Canon EOS REBEL T3i

DSLR camera equipped with a Canon MP-E 65mm f/2.8 1-5X macro lens. Paratype male (DHCO): photographs were taken with a Canon EOS Rebel T3i DSLR camera, Canon MP-E 65mm f/2.8 1-5X macro lens, controlled by Zerene Stacker AutoMontage software.

The acronyms used in the text are as follows:

DHCO – Daniel Heffern Collection, Houston, Texas, USA

JVCO – Josef Vlasak Collection, Schwenksville, Pennsylvania, USA

MHNUSC – Museo de Historia Natural de la Universidad de Santiago de Compostela, Santiago de Compostela, Spain

SDPC – Sergio Devesa Private Collection, Pontevedra, Spain

## Results

CERAMBYCIDAE Latreille, 1802

LAMIINAE Latreille, 1825

ACANTHOCININI Blanchard, 1845

*Pseudastylopsis* Dillon, 1956

*Pseudastylopsis* Dillon, 1956b: 220.

**Remarks.** – According to Dillon (1956b): “Moderately small or moderate-sized, subconvex forms, with prothorax quite cylindrical ... eyes separated above by twice the width of an upper lobe, lower lobe subequal to gena in height. Pronotum quite cylindrical, sides subparallel, widest just behind middle, not quite half again as wide as long, lateral

## Reviewer :

Antonio Santos-Silva (Museu de Zoologia, Universidade de São Paulo, Brazil) - Orcid: <https://orcid.org/0000-0001-7128-1418>

- ZooBank: <http://zoobank.org/8E7804F2-4315-4D23-9FA5-2E5D13841364>



This is an open access article under the terms of the Creative Commons Attribution-NonCommercial-NoDerivs License, which permits use and distribution in any medium, provided the original work is properly cited, the use is non-commercial and no modifications or adaptations are made.

Copyright 2023 The Authors. *Faunitaxys* published by Lionel Delaunay on behalf of the AFCFF (Association française de Cartographie de la Faune et de la Flore).

tubercles small, not or scarcely equaling median discal tubercle in this respect; disk entirely, distinctly punctate, with five or seven tubercles, the central one strongly prominent. Elytra distinctly punctate to apices, usually with prominent costae, always tuberculate or with scattered, serrate tufts; apices not prolonged, subtruncate or separately round. Prosternal process one-sixth as broad as a procoxal cavity; mesosternal process about two-thirds as broad as a mesocoxal cavity, expanded apically ... Antennae slightly longer than body in female, one-fourth longer in male; scape extending to just behind middle of pronotum, prominent at apex on ventral side; third segment at least one-fifth longer than first; fourth at least subequal to first ...” Dillon (1956b) included two species: *P. nebulosa* (Horn, 1880), the type species, and *P. pini* (Schaeffer, 1905). Linsley & Chemsak (1995) reported the prosternal process as “about one-sixth to one-third as broad as coxal cavities” and mesoventral process “about two-thirds as broad as coxal cavities.” However, Chemsak & Linsley (1986) described *P. squamosa* and reported the prosternal process as “almost one-half as broad as coxal cavities” and the mesoventral process “about as broad as coxal cavities,” and Linsley & Chemsak (1995) described *P. nelsoni nelsoni* and *P. nelsoni australis*, and described the prosternal process in the former as “about half as broad as coxal cavity” and the mesoventral process “about two-thirds as broad as coxal cavity.” Although the prosternal and mesoventral processes were not described in *P. nelsoni australis*, they reported that this subspecies is similar to *P. nelsoni nelsoni*. Therefore, it is expected that the processes are as in *P. n. nelsoni*. In the specimen of *P. nebulosa* we examined, the narrowest area of the prosternal process is about one-fourth the width of the procoxal cavity, and not one-sixth as reported in the original description of *Pseudastylopsis*.

Dillon (1956a) separated *Pseudastylopsis* (written as *Pseudostylopsis*) from *Leptostylus* in the alternative of couplet “1”: “Prosternal process one-half or more than half as wide as procoxal cavity,” leading to *Leptostylus*; and “Prosternal process less than half as wide as a procoxal cavity,” leading to *Pseudastylopsis*. However, the width of the prosternal process in the species currently included in these two genera is very variable, making the alternative of couplet not useful. Therefore, the separation of *Pseudastylopsis* from *Leptostylus* is problematic.

Finally, Pérez-Flores & Santos-Silva (2021) described *Pseudastylopsis albus* from Mexico and described the prosternal process “distinctly wide centrally, with its narrowest area about as wide as 1/3 of procoxal cavity; mesoventral process gradually narrowed toward its posterior third, then widened, with its narrowest area about as wide as 1/2 of mesocoxal cavity”.

### *Pseudastylopsis alba* Pérez-Flores & Santos-Silva, 2021

*Pseudastylopsis albus* Pérez-Flores & Santos-Silva, 2021: 185.

**Remarks.** – The suffix “-opsis,” from Greek ὄψις (*opsis*, meaning appearance), is feminine gender. Therefore, *Pseudastylopsis* is feminine gender and the species-group name, an adjective, must be corrected to “alba.”

### *Pseudastylopsis santossilvai* sp. nov.

(Fig. 1-14)

ZooBank: <http://zoobank.org/78DEFDBE2139-4391-BBCB-6FAD7313765A>

**Holotype**, ♀, COSTA RICA, *Puntarenas*, Santa Elena, Olingo Monteverde lodge, aprox. 2.5 km from Bosque Nuboso Monteverde reserve, 10°24'23"N 84°49'05"W, 1,458 m.s.n.m., 29.V-03.VI.2022, at light, S. Devesa leg. (SDPC), intended to be deposited in MHUSC.

### **Paratypes**

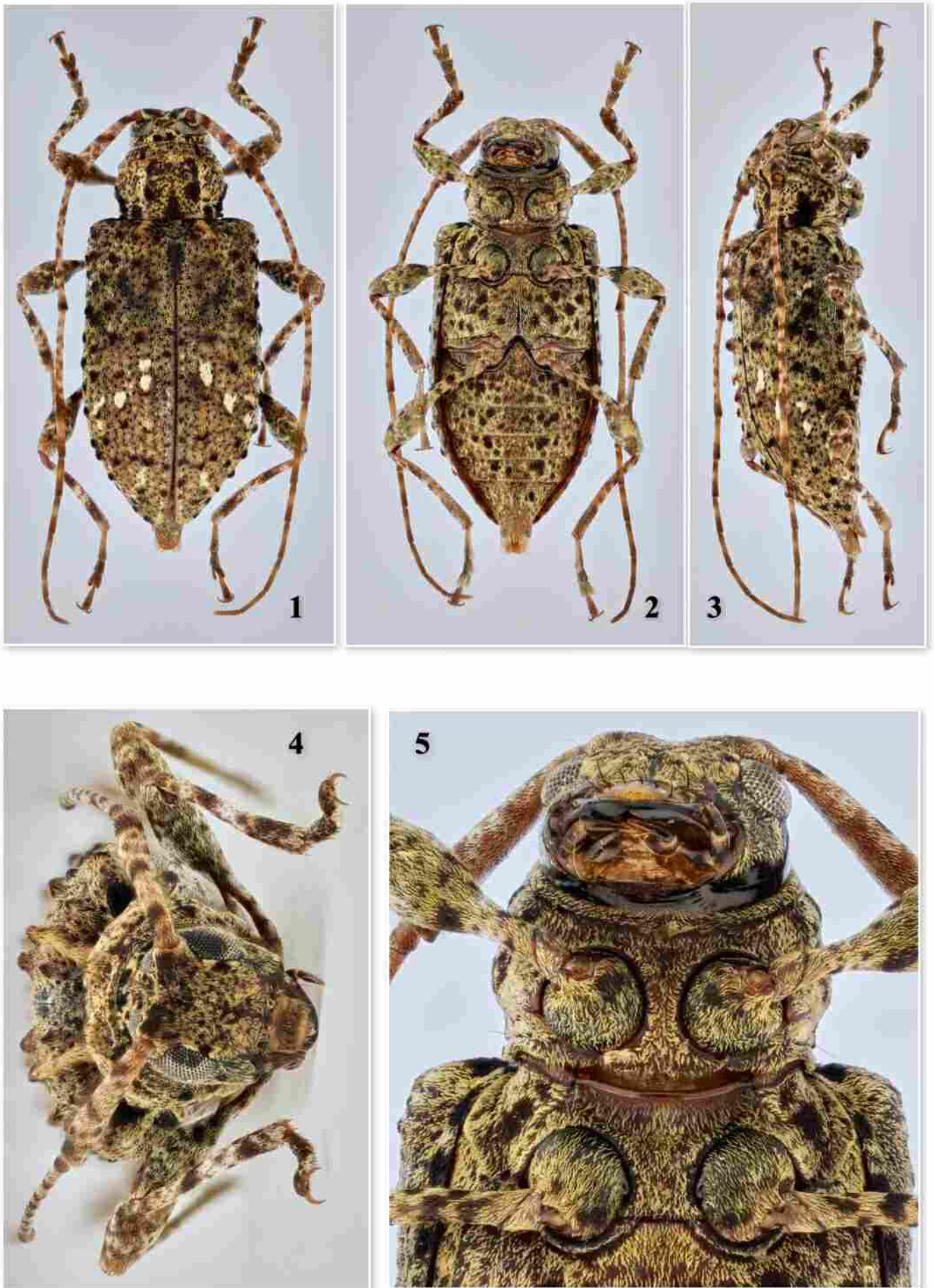
- COSTA RICA, *Puntarenas*, Santa Elena, El Establo hotel, 6-7.III.2022, J. Vlasak leg., 1 ♂ and 1 ♀ (JVCO);

- PANAMA, *Chiriquí*: Tree Treck Boquete, 8.81°N 82.396°W, 1 ♂, 31.VIII-4.IX.2021, B.T. Raber leg. (DHCO).

### **Description of the holotype**

**Coloration.** – Head capsule black; ventral mouthparts reddish brown, except palpomeres black with yellowish-brown apex; anteclypeus brownish with irregular dark-brown areas; labrum dark brown on posterior 2/3, brown close to anterior margin, and yellowish-brown between these two areas; scape brown with irregular black areas on basal third, center and apical area, reddish brown on remaining surface; pedicel blackish with irregular reddish-brown areas; antennomere III reddish brown, with irregular dark-brown maculae interspersed and blackish apex; antennomere IV orangish brown with large brown areas interspersed, brown areas absent on basal seventh, except dark-brown apex; antennomeres V–IX brownish on basal fifth and apical third, orangish-brown on remaining surface; antennomere X brownish; antennomere XI brownish, except orangish-brown apex. Prothorax brownish centrally, yellowish laterally, with two large black maculae centrally, three black maculae basally, two small black maculae apically, and one large black macula on sides from base to lateral tubercle. Ventral surface dark reddish brown with round black maculae on metaventrite and two small maculae on mesoventrite. Scutellum mostly black. Elytra mostly dark reddish brown with irregular black maculae interspersed, black maculae larger and more abundant on anterior half; posterior third with oblique row of irregular yellowish white maculae not reaching suture; two elongated yellowish white maculae on apical fifth. Femora reddish brown with irregular blackish maculae on peduncle and moderately large black maculae on dorsal and ventral surface of femoral club, another smaller about middle. Tibiae brown basally, reddish brown on remaining basal quarter, with black ring from anterior quarter to before middle, narrower and browner ventrally, black dorsally and laterally about apical third, orangish brown on remaining surface. Protarsomeres dark brown except reddish brown basal third of protarsomere V. Meso- and metatarsomere I reddish brown on basal half, dark brown on remaining surface; II–III dark brown; IV and basal half of V reddish brown, remaining surface of V dark brown. Abdominal ventrites mostly dark brown with irregular black maculae interspersed, except brownish apex of ventrite 4.

**Head.** – Frons abundantly, minutely punctate; with abundant yellowish-brown pubescence not obscuring integument, except moderately small black pubescent macula close to each eye, irregular black pubescent maculae interspersed superiorly and glabrous median groove; with one long, erect dark-brown seta close to eyes. Vertex with abundant yellowish-white pubescence partially obscuring integument, except a few small black spots between antennal tubercles, transverse, irregular pale-yellow pubescent band between antennal tubercles and upper eye lobes, small, irregular yellowish-white pubescent macula close to eyes, two black pubescent maculae centrally close to prothorax, two black maculae laterally, behind upper eye lobes close to prothorax, and small glabrous median groove. Area behind upper eye lobes with abundant black pubescence close to vertex and lower eye lobe, and abundant yellowish-white pubescence between these two areas. Area behind lower eye lobes with abundant yellowish-white pubescence not obscuring integument. Genae with abundant yellowish-white pubescence not obscuring integument, except glabrous apex; with one round black macula laterally with one long, erect blackish seta. Antennal tubercles with abundant black pubescence partially obscuring integument, except whitish pubescence on apex of anterior and posterior regions and yellow pubescence on apex of dorsal surface. Wide central area of postclypeus with moderately sparse yellowish-brown pubescence close to frons and sparse, short yellowish-brown setae directed forward close to anteclypeus; with a few long, erect yellowish-brown setae interspersed close to frons, and one long, erect seta on each side close to frons, seta black on basal third, yellowish on apical 2/3. Labrum with moderately sparse yellowish-white pubescence on posterior 2/3, glabrous on anterior third, except anterior margin with dense fringe of yellowish-brown setae; posterior 2/3 with long, erect setae interspersed, setae dark brown on basal half, yellowish on apical half. Gulaentum smooth, glabrous, except intermaxillary process with moderately abundant yellowish-white pubescence. Distance between upper eye lobes 0.20 times distance between outer margins of eyes; in frontal view, distance between lower eye lobes 0.60 times distance between outer margins of eyes. Antennae 2.00 times elytral length, reaching elytral apex at apical fifth of antennomere VI. Scape slightly projected on inner apex; with abundant blackish pubescence dorsally near base, close to apex and centrally, and abundant yellowish pubescence not obscuring integument on remaining surface, except dark-brown



**Fig. 1-5.** *Pseudastylopsis santossilvai*, holotype ♀ (SDPC).

1-3. Habitus. 1. Dorsal. 2. Ventral. 3. Lateral. 4. Head. 5. Prosternal and mesoventral processes.

pubescence on some small black areas. Pedicel with abundant, mostly blackish pubescence partially obscuring integument at apex, yellowish brown at base. Antennomeres III–IV with dense yellowish-white pubescence on light areas, dark yellowish brown on dark areas, except black pubescence on black apical area. Antennomeres V–X with dense yellowish pubescence on central area, yellowish brown basally and apically, the apical and basal areas increasing in length from antennomere V to antennomere X. Antennomere XI with moderately sparse yellowish–brown pubescence on basal 2/3 and abundant whitish pubescence not obscuring integument on apical third.

Antennal formula based on length of antennomere III:

– Scape = 0.68. – Pedicel = 0.09. – IV = 0.82. – V = 0.64. – VI = 0.32. – VII = 0.27. – VIII = 0.27. – IX = 0.27. – X = 0.27. – XI = 0.23.

**Thorax.** – Prothorax wider than long; sides with a very small tubercle with blunt apex about middle; basal and apical constriction well marked. Pronotum with eight tubercles, largest two elevated, subconical, close to center of anterior third, just below apical constriction, two slightly elevated, rounded dorsally, on sides of posterior third, two very slightly elevated on each side of anterior third, laterally to the largest tubercles, and another two slightly elevated, about middle of posterior third; moderately abundantly, coarsely punctate, except smooth tubercles; with abundant yellowish-brown pubescence not obscuring integument on central area from anterior to posterior constriction, a band of yellowish-white pubescence laterally and yellowish pubescence on sides; black areas as follows: two large, longitudinal bands centrally, from anterior 1/4 to posterior 1/4, one triangular basally next to scutellum, two small laterally on anterior 1/4 and two small laterally on posterior 1/4. Sides of prothorax somewhat sparsely, coarsely punctate; with abundant, both white and yellowish-brown pubescence not obscuring integument, except large black pubescent macula posteriorly from base to small round central tubercle; with a few long, erect blackish setae posteriorly close to pronotum. Prosternum with abundant yellowish pubescence not obscuring integument, pubescence slightly denser and yellower laterally. Prosternal process with moderately abundant whitish pubescence not obscuring integument; narrowest area 0.23 times procoxal width. Mesoventrite with sparse yellowish-white pubescence centrally, abundant laterally. Mesanepisternum, mesepimeron, metanepisternum, and sides of metaventrite with abundant yellowish pubescence not obscuring integument; remaining surface of metaventrite with slightly sparser yellowish pubescence. Mesoventrite without large black maculae; mesanepisternum with two black maculae, one large and one very small; metaventrite and metanepisternum with numerous, large round black maculae. Apical margin of mesoventral process slightly concave; narrowest area 0.47 times mesocoxal width; apex 0.53 times mesocoxal width. Scutellum with abundant blackish pubescence not obscuring integument, except sparse yellowish pubescence interspersed.

**Elytra.** – Parallel-sided on anterior half, gradually narrowed toward apex on posterior half; apex rounded; with abundant small tubercles. Centrobasal crest slightly distinct, tumid basally, with a row of tubercles. Humeral carina slightly distinct on anterior half, absent on posterior half. Abundantly, moderately coarsely punctate on anterior half, punctures gradually finer toward apex on posterior half. Anterior half of dorsal surface with yellowish-green pubescence, not obscuring integument; remaining dorsal surface with more yellowish-brown pubescence not obscuring integument. Base of centrobasal crest with dense, oblique, yellowish-brown pubescent band; apex of tubercles on centrobasal crest with short, black pubescence; most of remaining tubercles with black pubescence, some with yellowish-brown pubescence basally, except five tubercles located dorsally slightly after middle, together obliquely aligned, with dense white pubescence anteriorly and yellowish-brown pubescence apically; with small, oblique, white pubescent band near apex.

**Legs.** – Femora with abundant yellowish-white pubescence not obscuring integument. Protibiae with moderately sparse yellowish-white pubescence basally, dense white pubescence dorsally and laterally on remaining basal 2/3, except blackish pubescence on black area, abundant black pubescence dorsally and laterally on apical third, and abundant, bristly yellowish-brown pubescence on remaining

ventral surface; mesotibiae with pubescence as on protibiae dorsally and laterally, ventral surface with yellowish-brown pubescence sparser and distinct only on posterior half, and posterior half of ventral surface with short, thick, erect yellowish-brown setae; metatibiae with sparse yellowish-white pubescence on lighter areas, except denser white pubescence dorsally on central light area, somewhat abundant dark-brown pubescence on dark anterior area, sparse yellowish-brown pubescence with short yellowish-white setae interspersed dorsally and laterally on apical black area, and bristly yellowish-brown pubescence ventrally on posterior half, with short, erect yellowish-brown setae interspersed. Dorsal surface of tarsi with abundant yellowish-brown pubescence not obscuring integument; tarsomeres V with a few long, erect dark-brown setae on apical third; metatarsomere I subequal to II–III together.

**Abdomen.** – Ventrites with abundant yellowish-white pubescence not obscuring integument laterally, yellowish-brown centrally; abundant round black maculae interspersed; apex of ventrite 4 glabrous; ventrite 5 triangularly shaped on basal 2/3, subparallel-sided projected on apical 1/3, apex emarginate-truncate, with sparse, long yellowish-brown setae directed backward.

**Male.** – Ventrite 5 triangularly shaped from base to apex, apex not projected. Prosternal and mesoventral processes narrower. Antennae 1.75 times elytral length, reaching elytral apex at basal fifth of antennomere VII.

**Variation.** – Width of mesoventral process variable in males and females. Apex of mesoventral process variable in females: from distinctly concave to straight. Apex of mesoventral process variable in males: from distinctly projected laterally to not projected laterally.

**Dimensions** (mm) (holotype ♀/ paratype ♀/ paratypes ♂).

– Total length, 7.40/8.00/7.45–8.35;  
 – Prothoracic length, 1.20/1.55/1.30–1.65;  
 – Anterior prothoracic width, 1.60/1.70/1.45–1.65;  
 – Posterior prothoracic width, 1.70/2.15/1.70–2.00;  
 – Maximum prothoracic width, 2.00/2.35/2.05–2.30;  
 – Humeral width, 2.90/3.55/2.75–3.25;  
 – Elytral length, 5.40/5.95/5.55–6.05.

**Etymology.** – We are pleased to name this species for Antonio Santos-Silva (Museu de Zoologia, Universidade de São Paulo, São Paulo, Brazil) to recognize his contributions in the study of Cerambycidae.

**Remarks.** – As reported above, the separation of *Pseudastylopsis* from *Leptostylus* is problematic. Even so, we chose to include the new species in *Pseudastylopsis* due to its general appearance being much more similar to the species of this genus. Furthermore, the width of the prosternal process of one fifth to one-sixth of the width of procoxal cavity agrees well with the original description of the genus.

*Pseudastylopsis santossilvai* sp. nov. is similar to *P. squamosa* Chemsak & Linsley, 1986, but differs as follows: narrowest area of the prosternal process about one-fourth or less of the width of procoxal cavity; mesoventral process distinctly narrower than mesocoxal cavity; and elytra without black macula close to tubercles located after middle with dense white pubescence anteriorly and yellow pubescence apically. In *P. squamosa*, the narrowest area of the prosternal process is almost one-half as broad as procoxal cavity (Chemsak & Linsley 1986), mesoventral process about as broad as mesocoxal cavity (Chemsak & Linsley 1986), and elytra with black macula close to white pubescent area after middle (same area of the tubercles with white and yellow pubescence in the new species).

The general appearance of *P. santossilvai* sp. nov. resembles *Leptostylus spiculatus* Bates, 1880 (see photographs on Bezark 2023 and in Maes *et al.* 2010). However, the body is proportionally slender (stouter in *L. spiculatus*), the black area on the posterior region of sides of the prothorax is visible dorsally (if present, not visible dorsally in *L.*



**Fig. 6-9.** *Pseudastylopsis santossilvai*, habitus.  
6-7. Paratype ♂ (JVCO). 6. Dorsal. 7. Ventral. 8-9. Paratype ♀ (JVCO). . 8. Dorsal. 9. Ventral.

*spiculatus*), black posterior macula on sides of the pronotum not aligned with the longitudinal central bands (fused and aligned in *L. spiculatus*), tubercles on the posterior half of the elytra have distinct dense and large tufts of white pubescence, forming an oblique band ascending from sides to suture (white pubescent tufts smaller and not forming an oblique band ascending from sides to suture in *L. spiculatus*), and the apex rounded (obliquely truncate in *L. spiculatus*).

## New Distribution Records

**Cerambycinae** Latreille, 1802

**Dryobiini** Arnett, 1962

*Anisotyma soteri* Napp & Monné, 2009

(Fig. 24).

### Material examined

COSTA RICA (**new country record**), *Guanacaste*, Rincón de la Vieja, 29.VII.2016, J. Vlasak leg. (JVCO).

Previously known only from the holotype collected in El Salvador (Monné 2023a).

**Elaphidiini** Thomson, 1864

*Ambonus electus* (Gahan, 1904)

(Fig. 15-17).

### Material examined

PANAMA (**new country record**), Distrito de Antón, Coclé, Río Hato, Hotel Bijao Beach Resort, 08°23'52.68"N 80°04'08.9"W, 10 m.s.n.m., 01-05.II.2023, 1 ♀, at light, S. Devesa leg. (SDPC).

Previously recorded from Honduras?, Nicaragua, Colombia, Suriname, Venezuela, Brazil (Rondônia, Mato Grosso, Goiás, Mato Grosso do Sul, Rio Grande do Norte, Paraíba, Alagoas, Pernambuco, Bahia, Minas Gerais, Espírito Santo, Rio de Janeiro, São Paulo, Paraná, Santa Catarina), Bolivia, Paraguay, and Argentina (Monné 2023a).

*Anelaphus souzai* (Zajciw, 1964)

(Fig. 18-20)

### Material examined

PANAMA (**new country record**), Distrito de Antón, Coclé, Valle de Antón, Hotel Golden Frog Inn., 08°36'37"N 80°06'36"W, 634 m.s.n.m., 05-10.II.2023, 1 ♀, at light, S. Devesa leg. (SDPC).

Previously recorded from French Guiana, Brazil, Bolivia, Paraguay, and Argentina (Monné 2023a).

**Oemini** Lacordaire, 1868

*Placoeme vitticollis* Chemsak & Linsley, 1964

(Fig. 25-26)

### Material examined

COSTA RICA (**new country record**), *Guanacaste*, Diria National Park, XII.2015, 2 specimens, J. Vlasak leg. (JVCO).

Previously recorded from Mexico and Guatemala (Monné 2023a).

**Lamiinae** Latreille, 1825

**Acanthocinini** Blanchard, 1845

*Atrypanius cinerascens* (Bates, 1864)

(Fig. 21-23).

### Material examined

PANAMA (**new country record**), Distrito de Antón, Coclé, Río Hato, Hotel Bijao Beach Resort, 08°23'52.68"N 80°04'08.9"W, 10 m.s.n.m., 01-05.II.2023, 1 male, at light, S. Devesa leg. (SDPC).

Previously recorded from Trinidad and Tobago, Colombia, Venezuela, French Guiana, and Brazil (Monné 2023b).

**Acanthoderini** Thomson, 1860

*Plistonax pictus* (Galileo & Martins, 2012)

(Fig. 27-28).

### Material examined

COSTA RICA (**new country record**), *Puntarenas*, Golfito, Playa Nicuesa, 17-19.IV.2017, 1 ♀, J. Vlasak leg. (JVCO); Golfito, 20.IV.2017, 1 ♂, J. Vlasak leg. (JVCO).

Previously recorded from Nicaragua and Panama (Monné 2023b).

## Acknowledgments

We express our sincere thanks to our friend Dan Heffern for allowing us to study his specimen from Panama and to Antonio Santos-Silva for initial identification of the new species, for technical discussions and comments during the description, for the photos of the paratype (DHCO), and for his friendship and kindness. We also wish to thank the reviewer for improving the manuscript.

## References

- Bezark L.G., 2023. – A photographic Catalog of the Cerambycidae of the World. New World Cerambycidae Catalog. Available from: <http://bezbycids.com/byciddb/wdefault.asp?w=n/> (accessed 11 June 2023).
- Chemsak J.A. & Linsley E.G., 1986. – New Lamiinae from Mexico (Coleoptera: Cerambycidae). *Journal of the New York Entomological Society*, 94(1): 20-31.
- Dillon L., 1956a. – The Nearctic components of the tribe Acanthocinini (Coleoptera: Cerambycidae). Part I. *Annals of the Entomological Society of America*, 49(2): 134-167.
- Dillon L., 1956b. – The Nearctic components of the tribe Acanthocinini (Coleoptera: Cerambycidae). Part II. *Annals of the Entomological Society of America*, 49(3): 207-235.
- Linsley E.G. & Chemsak J.A., 1995. – *The Cerambycidae of North America, Part VII, No. 2: Taxonomy and Classification of the Subfamily Lamiinae, Tribes Acanthocinini through Hemilophini*. University of California Press, Berkeley 114: i-xii + 1-292.
- Maes J-M., van den Berghe E., Dauber D., Audureau A., Nearn E., Skillman F., Heffern D. & Monné M., 2010. – Catálogo ilustrado de los Cerambycidae (Coleoptera) de Nicaragua. Parte IV – Lamiinae – Disteniinae. *Revista Nicaraguense de Entomología*, 70 (suplemento 1-4): 1-879.

### Author contributions <sup>1</sup>

*Project initiator.* – SD  
*Scientific coordinator.* – SD  
*Publisher Correspondence.* – SD  
*Writing the article.* – SD & JV  
*Article proofreading.* – SD & JV  
*Bibliographic work.* – SD  
*Material study.* – SD & JV  
*Author of the figures.* – SD & JV  
*Collectors.* – SD & JV

<sup>1</sup> SD= Sergio Devesa - JV= Josef Vlasak

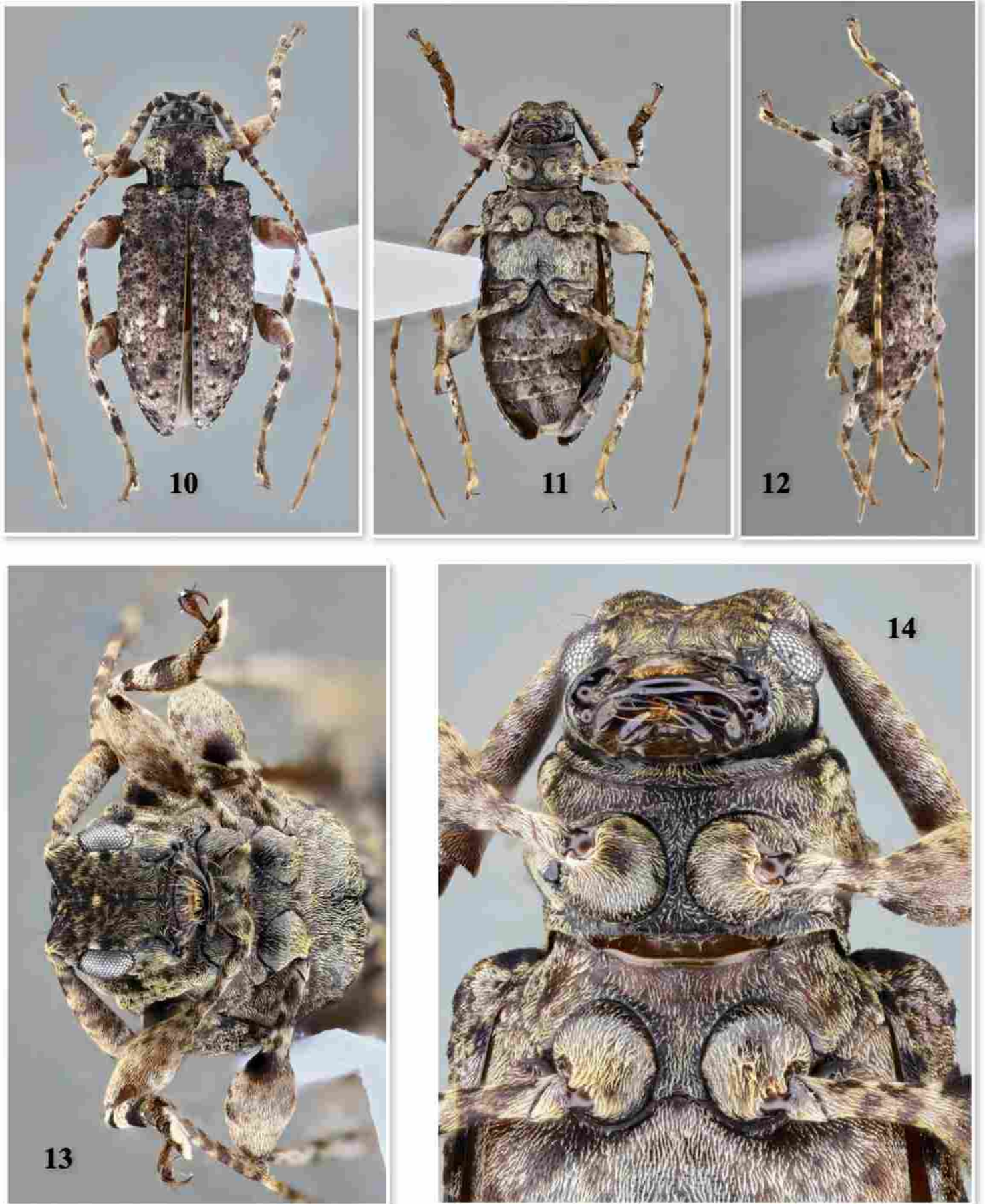


Fig. 10-14. *Pseudastylopsis santossilvai*, paratype ♂ (DHCO).

10-12. Habitus. 10. Dorsal. 11. Ventral. 12. Lateral. 13. Head. 14. Prosternal and mesoventral processes.

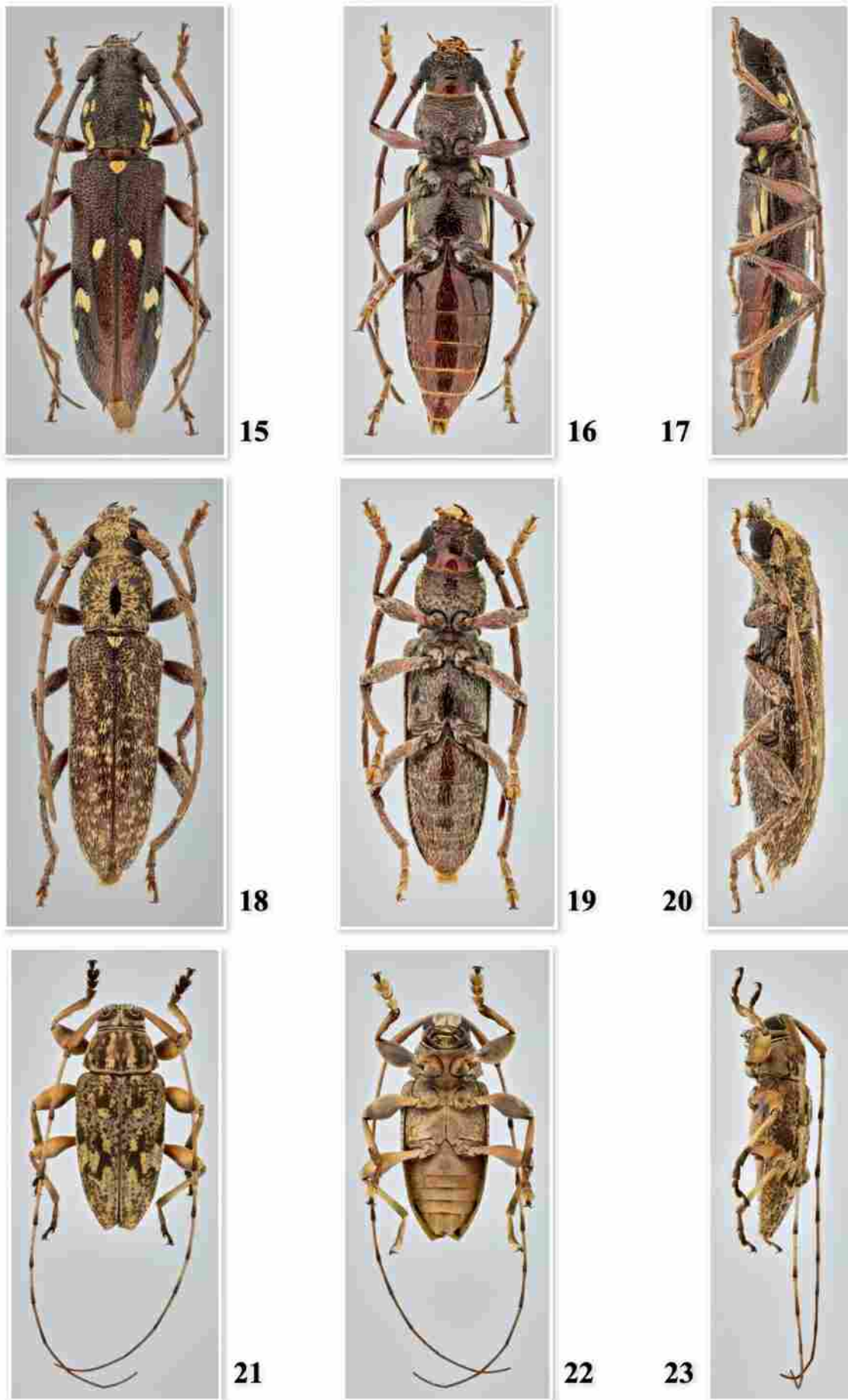


Fig. 15-23. New country records, habitus (dorsal, ventral & lateral).

15-17. *Ambonus electus* (Gahan, 1904), ♀. 18-20. *Anelaphus souzai* (Zajciw, 1964), ♀. 21-23. *Atrypanius cinerascens* (Bates, 1864), ♂.

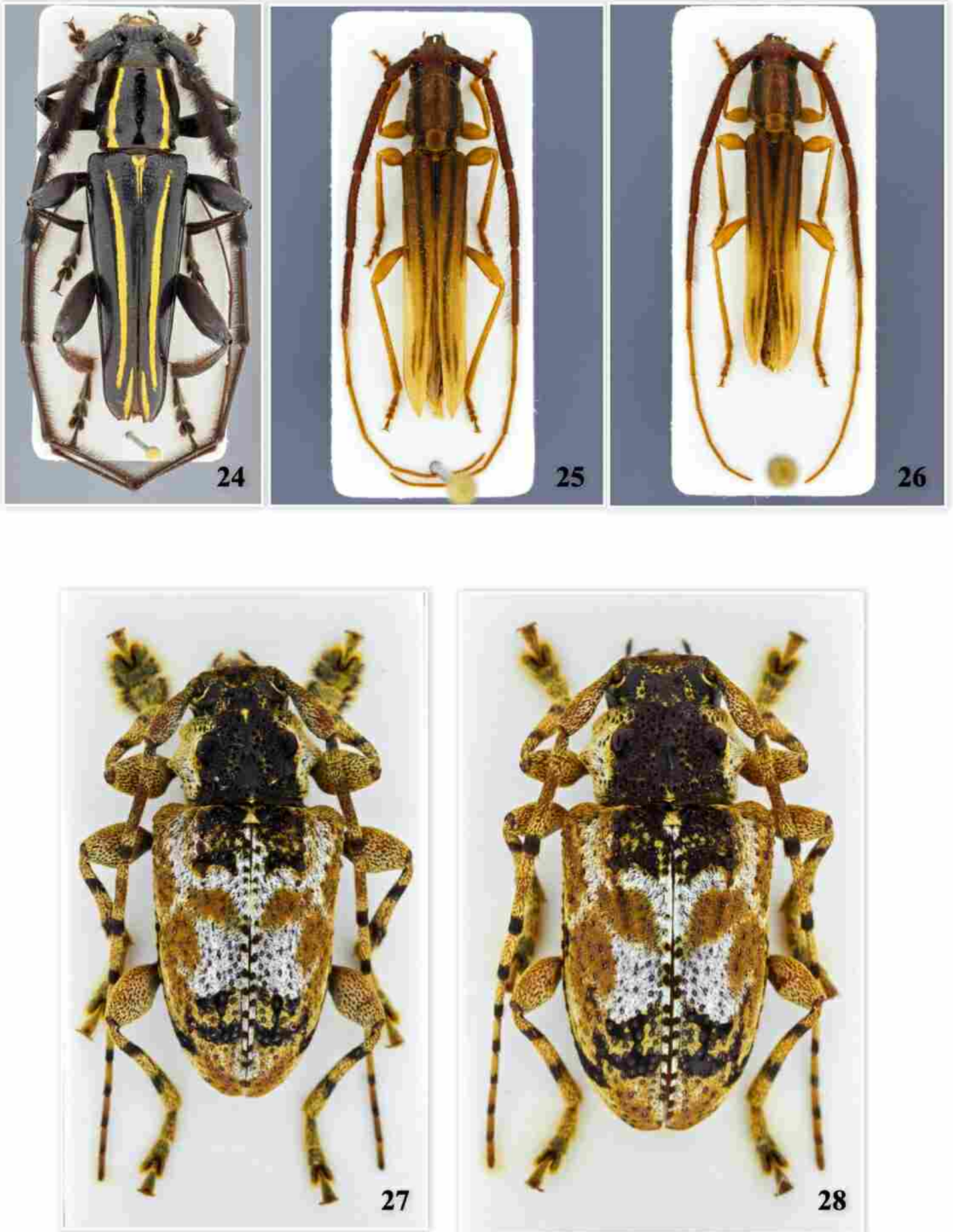


Fig. 24-28. New country records, habitus.

24. *Anisotyma soteri* Napp & Monné, 2009, ♂. 25-26. *Placoeme vitticollis* Chemsak & Linsley, 1964. 25. Specimen 1. 26. Specimen 2. 27-28. *Plistonax pictus* (Galileo & Martins, 2012). 27. ♂. 28. ♀.

Monné M.A., 2023a. – Catalogue of the Cerambycidae (Coleoptera) of the Neotropical region. Part I. Subfamily Cerambycinae. Available from: <https://cerambycids.com/catalog/> (Last accessed 9 May 2023).

Monné M.A., 2023b. – Catalogue of the Cerambycidae (Coleoptera) of the Neotropical region. Part II. Subfamily Lamiinae. Available from: <https://cerambycids.com/catalog/> (Last accessed 9 May 2023).

Pérez-Flores Ó. & Santos-Silva A., 2021. – New genus, new species and new records in Lamiinae (Coleoptera, Cerambycidae). *Zootaxa*, 4965(1): 181-190.

Tavakilian G. & Chevillotte H., 2022. – Titan: base de données internationales sur les Cerambycidae ou Longicornes. Version 4.0. Available from: <http://titan.gbif.fr/> (Last accessed 5 May 2023).

## Résumé

Devesa S. & Vlasak J., 2023. – Nouvelles espèces et nouveaux signalements de Cerambycidae néotropicaux (Coleoptera). *Faunitaxys*, 11(42): 1 – 11.

Une nouvelle espèce d'Acanthocinini, *Pseudastylopsis santossilvai* **sp. nov.**, est décrite et illustrée du Costa Rica et du Panama. De nouvelles mentions géographiques pour le Costa Rica sont fournies et les espèces sont illustrées : *Plistonax pictus* (Galileo & Martins, 2012) (Acanthoderini) ; *Anisotyma soteri* Napp & Monné, 2009 (Dryobiini) ; *Placoeme vitticollis* Chemsak & Linsley, 1964 (Oemini). De nouvelles mentions géographiques pour le Panama sont fournies et les espèces sont illustrées : *Atrypanius cinerascens* (Bates, 1864) (Acanthocinini), *Ambonus electus* (Gahan, 1904) et *Anelaphus souzai* (Zajciw, 1964) (Elaphidiini). Le nom du groupe d'espèces de *Pseudastylopsis albus* Pérez-Flores & Santos-Silva, 2021 est corrigé.

Mots-clés. – Coleoptera, Cerambycidae, longicornes, distribution, Amérique centrale, taxonomie.

## Resumen

Devesa S. & Vlasak J., 2023. – Nuevas especies y nuevos registros de país en Neotropical Cerambycidae (Coleoptera). *Faunitaxys*, 11(42): 1 – 11.

Se describe y se ilustra una nueva especie de Acanthocinini: *Pseudastylopsis santossilvai* **sp. nov.** de Costa Rica y Panamá. Se aportan nuevas citas para Costa Rica y se muestran fotos de las especies: *Plistonax pictus* (Galileo & Martins, 2012) (Acanthoderini); *Anisotyma soteri* Napp & Monné, 2009 (Dryobiini); *Placoeme vitticollis* Chemsak & Linsley, 1964 (Oemini). Se aportan nuevas citas para Panamá y se muestran fotos de las especies: *Atrypanius cinerascens* (Bates, 1864) (Acanthocinini) y *Ambonus electus* (Gahan, 1904) y *Anelaphus souzai* (Zajciw, 1964) (Elaphidiini). Se corrige el nombre de *Pseudastylopsis albus* Pérez-Flores & Santos-Silva, 2021.

Palabras clave. – Coleoptera, Cerambycidae, Longicornios, Distribución, Centroamérica, Taxonomía.

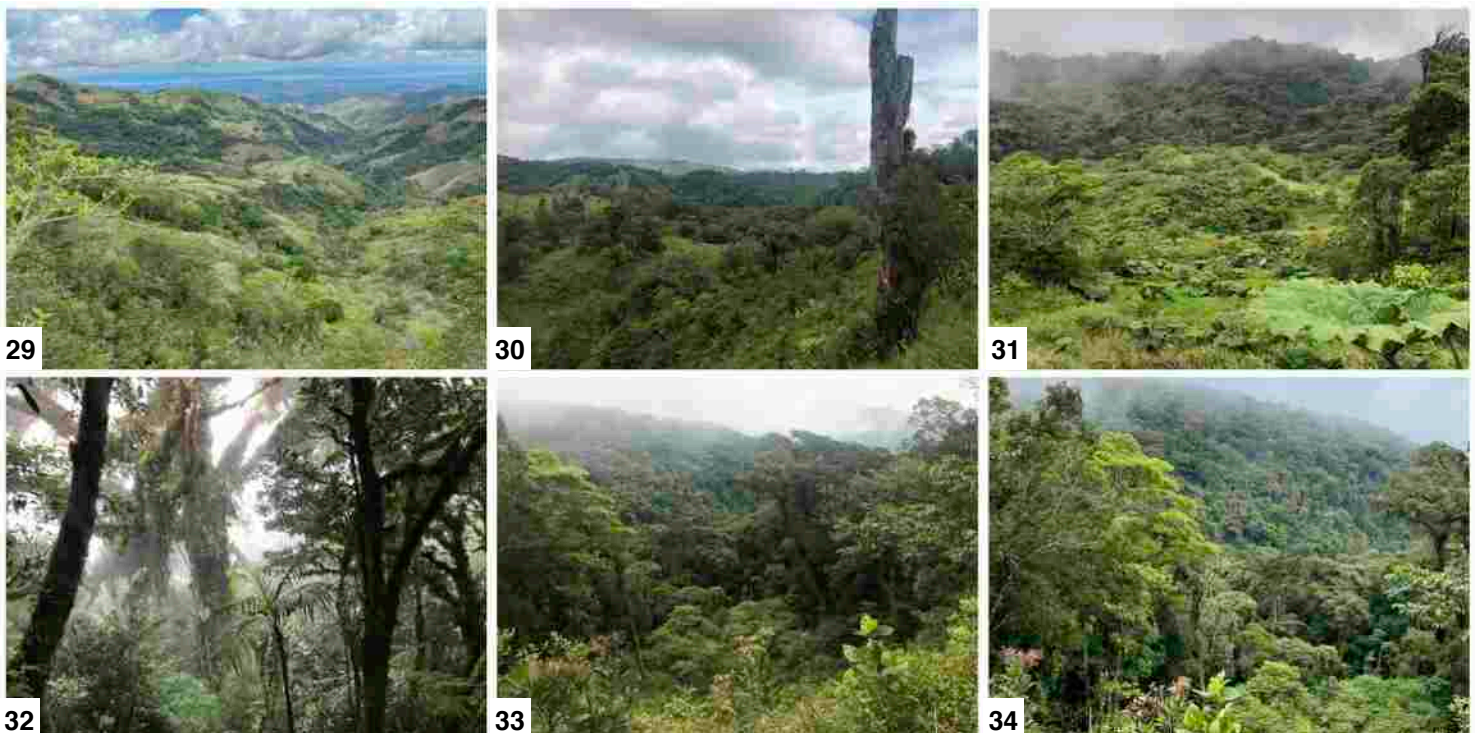


Fig. 29-34. Monteverde, COSTA RICA.



35



36



37



38



39



40



41



42



43

**Fig. 35-41. COSTA RICA. Fig. 35.** Cahuíta. **Fig. 36.** Braulio Carrillo (road to). **Fig. 37.** Antonio. **Fig. 38-39.** Volcán Arenal. **Fig. 40.** Volcan Irazú. **Fig. 41.** Playa Hermosa, Guanacaste. **Fig. 42-43. PANAMA. Fig. 42.** Altos de Campana. **Fig. 43.** Valle de Antón.

# Faunitaxys

*Volume 11, Numéro 42, Juin 2023*

## SOMMAIRE

Nouvelles espèces et nouveaux signalements de Cerambycidae néotropicaux (Coleoptera).

*Sergio Devesa & Josef Vlasak* ..... 1 – 11

## CONTENTS

New species and new country records in Neotropical Cerambycidae (Coleoptera).

*Sergio Devesa & Josef Vlasak* ..... 1 – 11



*Illustration de la couverture :*

Cloud Forest, Monteverde (Costa Rica).

Crédits:

**Sergio Devesa:** Fig. 1-5, 15-23 & couverture.

**Josef Vlasak:** Fig. 6-9 & 24-28.

**Antonio Santos-Silva:** Fig. 10-14